

We partner with you to implement practical, research-informed practices that shift the way educators, students, and parents think of school! We focus on student engagement and empowerment in equitable learning environments to build academic resilience, social and emotional learning (SEL), and, ultimately, efficacy.



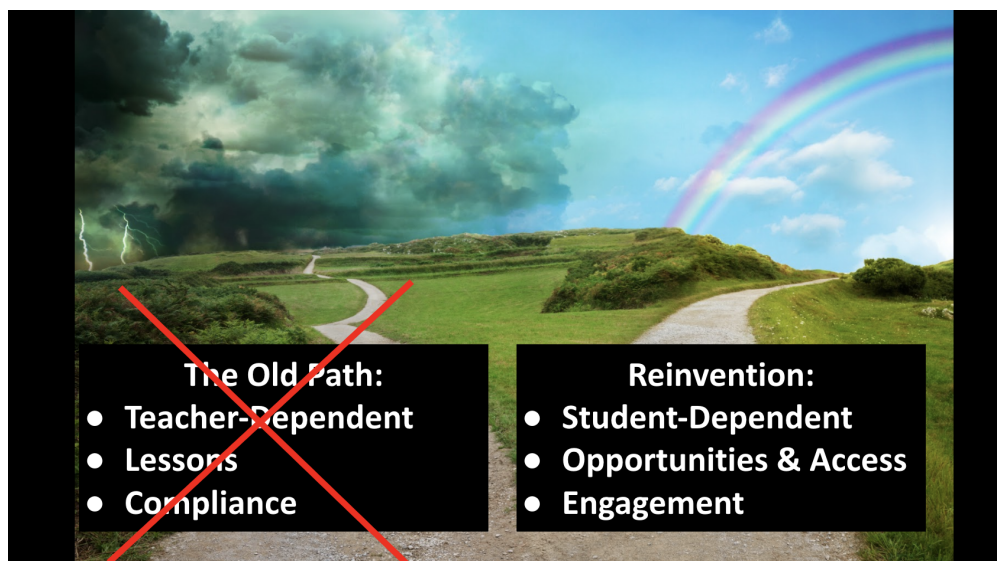
**Let's Help
Students
Change
The World.**

IDE Corp. — We ARE Innovative Designs for Education!

- Customized Professional Learning
- Innovative curriculum design
- Leadership development
- Six books on instructional innovation

Key Topic: Learning Gaps

It's time to #DoSomethingDifferent for the future of education. Which path are you choosing?



Where students were dependent on teachers in classrooms to tell them what to do and when to do it, when the core form of instruction was the teacher's lessons, and when teachers depended on students' compliance . . . during the pandemic, this teacher-dependent model crumbled.

Where students were taking charge of their own learning and teachers acted as curators and facilitators of the learning experience . . . during the pandemic, teaching and learning continued with minimal adjustments. IDE Corp.'s instructional approaches worked during the pandemic and will prepare your students with academic resilience for the future.

What We Know About Pandemic-Related Learning Gaps

- Some students fared better than others when learning remotely.
- Some teachers fared better than others when teaching remotely.
- Individual students may have learning gaps in different academic areas; however, through “Learning Acceleration,” students can catch up quickly.

Schools need to focus on assets and acceleration over deficits and losses!

- Differentiation becomes more important than ever!
- Formative assessment becomes more important than ever!
- Ensuring equitable learning environments is more important than ever!
- Empowering students to take charge of their own learning frees the teacher up to become a true, personalized facilitator.

It's not about remediation . . . it's not about dropping parts of the curriculum; it's about pursuing student-dependent learning.

- Teaching through power standards: Which standards drive mastery of other standards?
- Engaging students through the 5 Ps of PBL: How do you increase motivation to fuel learning?
- Ensuring access for all to differentiated opportunities to learn: How do you ensure equity so that all students have access to meaningful opportunities to learn?
- Prioritizing structures to build executive function: How do you accelerate learning by building skills that are foundational to learning while addressing the content itself?
- Maximizing teachers' time for learning facilitation: How can teachers shift from information dissemination to become facilitators of personalized learning?

Professional Learning Opportunities Spring and Summer 2021

Do you want your teachers working directly with a consultant during specific days?

- We offer a 4- to 8-day remote or in-person workshop on **Addressing Learning Gaps** with optional follow-up coaching.
- In the 4-day workshop, teachers will build their instructional repertoire for differentiated instruction, formative assessment to drive instruction, teaching through power standards, and structures for building greater student responsibility for learning.
- With additional days, we can add teacher facilitation, ways to weave equity throughout all classroom experiences, the role of executive function in learning acceleration, the power of PBL to build student engagement, and time for teachers to design materials to use immediately in their classrooms.
- The workshop is customized to reference your district's existing initiatives, e.g., UDL, RTI, SEL, AVID, personalized learning, and more.
- *Fees: \$2,010 per day for groups of up to 20 teachers* - idecorp.com

Do you want to offer your teachers an online experience facilitated by a consultant?

- Our **Virtual Learning Communities (VLCs)** run for 5 weeks during the school year or 2 weeks in the summer. Educators participate at times convenient for them and have access to a consultant who works with them as they complete the course content (25–30 hours of engagement).
- Spring courses are running April 13 – May 17:
 - **Reinventing the Classroom Experience**
 - **Facilitating Academic Resilience**
 - **Prioritizing Social and Emotional Learning**
 - **PBL Implementation — Next Steps in Student-Centered ALU Design**
- Summer courses run for 2 weeks each at varied times throughout the summer:
 - **Reinventing the Classroom Experience**
 - **The Equity Lens: Reflecting on Your Learning Environment**
 - **Building Executive Function to Support Learning Acceleration**
 - **Designing Problem-Based Authentic Learning Units**
 - **Prioritizing Social and Emotional Learning**
- *Fees: \$595 per person per course; \$4,950 for a 10-seat registration (seats may be used by different educators across a year)* edquiddity.com/VLC

More on the next page . . .

Do you want to offer your teachers a self-paced experience without consultant facilitation?

- Our **Self-Paced** PD experience provides participants with 25–30 hours of content engagement that they can navigate in any order, at their own pace, at their own times.
- It's like giving your educators an "e-book on steroids!" It includes videos, e-text, resources, examples, insights, self-checks, and more.
- Currently available PD experiences:
 - **Reinventing the Classroom Experience**
 - **The Equity Lens: Reflecting on Your Learning Environment**
- Coming soon:
 - **Increasing Engagement with Differentiated Activity Lists**
 - **Building Executive Function: Skills for Life**
 - **Anchoring Learning and Engaging Students Through the 5 Ps of PBL**
- *Fees: \$99 per participant per PD experience; bulk pricing when purchasing over 500 logins - learn.edquiddity.com*

Let's Talk!

833-GO-LATIC • solutions@idecorp.com