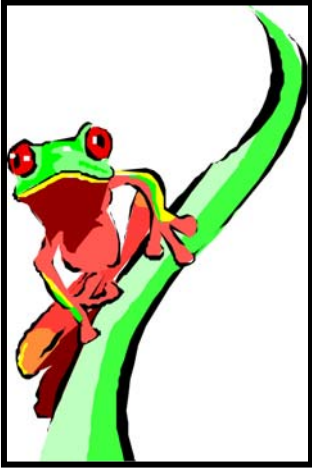


Wild Thornberry's Rain Forest Rescue



Eliza Thornberry of Nickelodeon's *The Wild Thornberry's* is going on another fantastic adventure and needs your help! She was informed by a red-eyed tree frog that loggers are cutting down trees in the rainforest where he lives. Although his species is not in danger, his environment is shrinking quickly and soon his kind will have no where to live! Could the tree frogs survive in another location in the world?

Help Eliza and the red-eyed tree frog convince loggers that the rainforest needs to be preserved. Write a letter to the loggers with facts about the environment and its importance in an effort to save the rainforest.

Wild Thornberry's Rain Forest Rescue Rubric

	Apprentice Great Start!	Practitioner You're There!	Expert Above and Beyond!
Rainforest	<ul style="list-style-type: none"> ▪ use the Internet to research and describe the characteristics of a rainforest ▪ identifies 2-3 animals that live in the rainforest 	<p>All of Apprentice plus:</p> <ul style="list-style-type: none"> ▪ uses the Internet to research and accurately describe the layers of a rain forest ▪ describes 3-4 factors that make this habitat ideal for the tree frogs 	<p>All of <i>Practitioner</i> plus:</p> <ul style="list-style-type: none"> ▪ explains the importance of the rainforest to people and cultures ▪ prioritizes which group might benefit more from conservation—people or animals.
Map	Draws a map of (1) country that has a rainforest region	<ul style="list-style-type: none"> ▪ draws a world map identifying <i>ALL</i> of the countries and regions where rainforests exist. ▪ color codes world map identifying where tree frogs currently live 	All of <i>Practitioner</i> plus compares the size of today's rainforests to their size 20 years ago
Environmental Effects	Describes the effects of logging on rainforests environments	<ul style="list-style-type: none"> ▪ describes the effects of logging on rainforests environments ▪ describes the role of the tree frog in the rainforest ecosystem 	All of <i>Practitioner</i> plus uses <i>Kidspiration</i> to diagram what changes would occur in its eco system if the red eyed tree frog became extinct
Letter to Loggers	<ul style="list-style-type: none"> ▪ greeting ▪ 2-3 sentence body ▪ provides (1) benefit of the rainforest 	<ul style="list-style-type: none"> ▪ greeting ▪ 2-3 sentence body ▪ provides 2-3 facts about the benefits of the rainforests ▪ identifies 1-2 effects of deforesting on the environment ▪ conclusion 	All of <i>Practitioner</i> plus (1) option to deforesting

Wild Thornberry's Rain Forest Rescue Web Resources

Web Resources:

Enchanted Learning – All about Rainforests

<http://www.enchantedlearning.com/subjects/rainforest/>

Rainforest Strata – Label Me! (Print out and color)

<http://www.enchantedlearning.com/subjects/rainforest/label/labelstrata.shtml>

Red-Eyed Tree Frog

<http://www.enchantedlearning.com/subjects/amphibians/redeyedtreefrog.shtml>

Rain Bird – Rain Forest Curriculum

<http://www.rainbird.com/rainforest/index.htm>

Field Trip to a Rain Forest - Software CD

<http://www.swexpress.com/home.nsf/0/AE73E067D4BC72DA85256FA2007BEAD4?opendocument&title=A+Field+Trip+to+the+Rainforest+Deluxe>

A Virtual Tour of the Rain Forest

<http://www.bsrsi.msu.edu/rfrc/tour/rainforest.html>